



# INSTALLATION GUIDE



# Genmitsu

**1010 XY-Axis Extension kit  
for PROVerXL 4030**

V1.0 Feb.2022

Thank you for purchasing the Genmitsu 1010 XY-Axis Extension kit for PROVerXL 4030.

For technical support, please email us at [support@sainsmart.com](mailto:support@sainsmart.com).

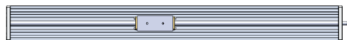
Help and support is also available from our Facebook group. (SainSmart Genmitsu CNC Users Group)



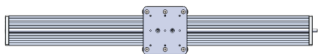


# Package List

---



1 X-axis Aluminum Extrusion



2 2×Y-axis Aluminum Extrusion



3 2×Front/Back Plate



4 Cable Management  
(Drag Chain+Wiring)

5 2×M5\*20 Screws

6 2×M5\*14 Screws

7 2mm Hexagon Wrench

8 2.5mm Hexagon Wrench

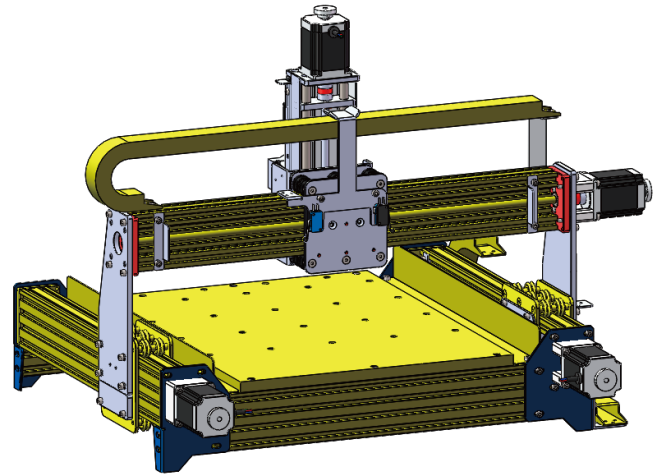
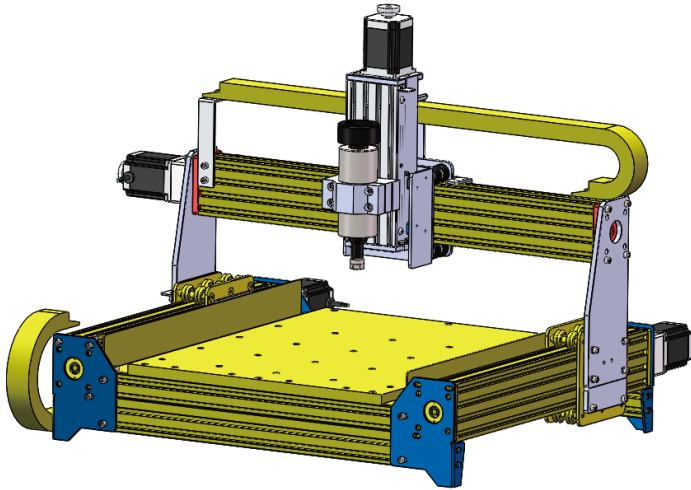
9 3mm Hexagon Wrench

10 4mm Hexagon Wrench

11 Installation Guide

A schematic diagram showing a probe tip, represented by a series of nested rectangles, in contact with a surface. The tip is positioned above a rectangular feature on the surface, with its lower edge touching the top edge of the feature.

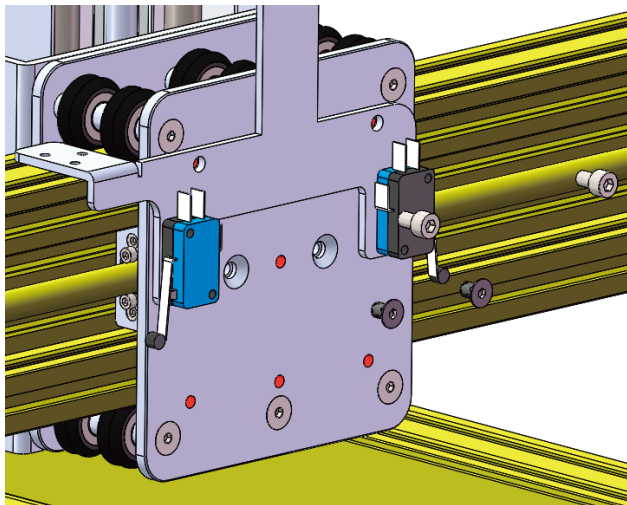
Uninstall the parts that are marked as Yellow.



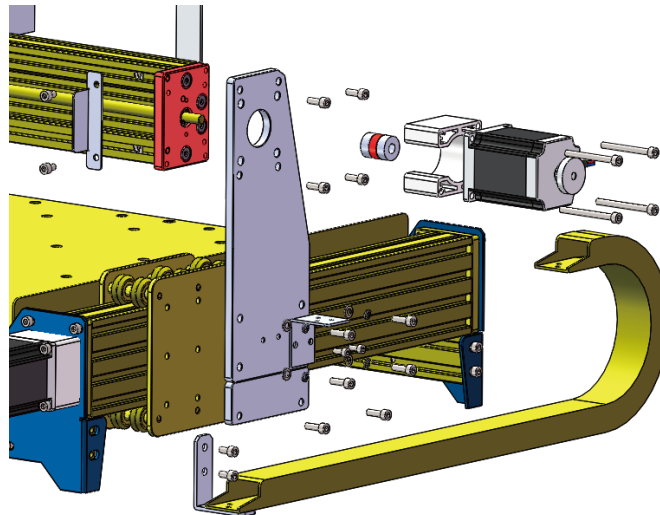
# Before Installation

**Step 1:** Unplug all wiring and uninstall both cable chains.

**Step 2:** Uninstall X limit switch assembly.



Step 1

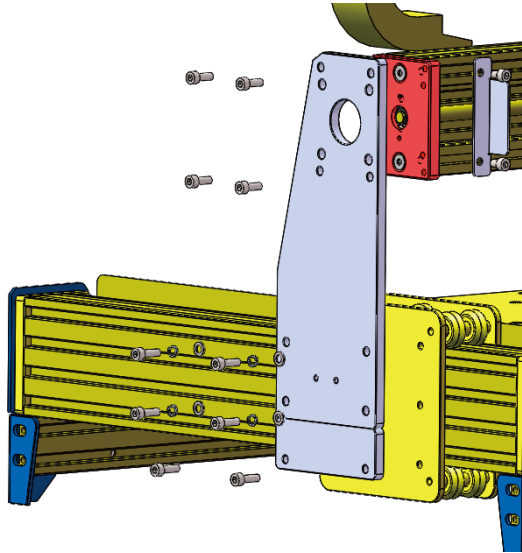


Step 2

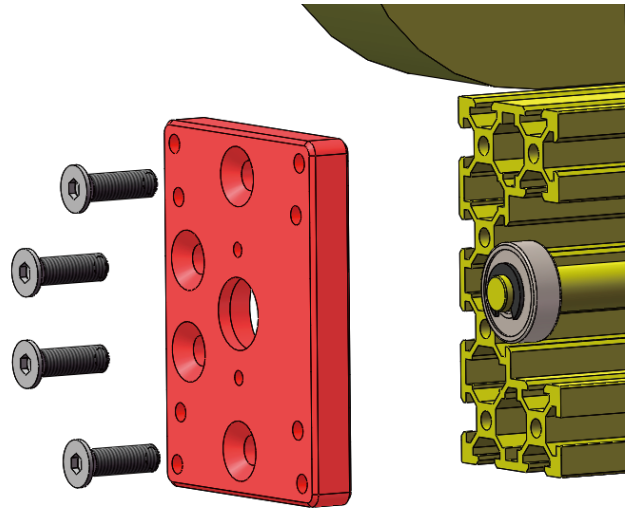
## Before Installation

**Step 3:** Uninstall X-Axis stepper motor and stepper motor mount, as well as all parts in blue.

**Step 4:** Uninstall red side plate from one side of X -axis and slide the X-Z assembly off of the X axis.



Step 3

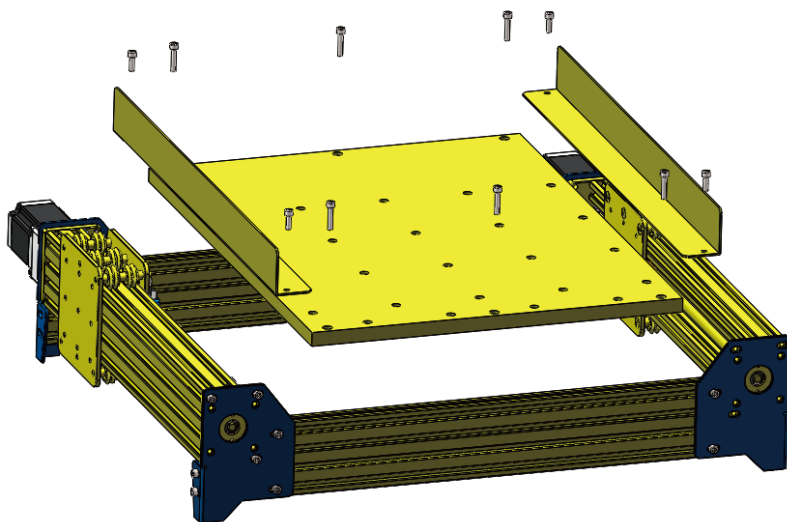


Step 4

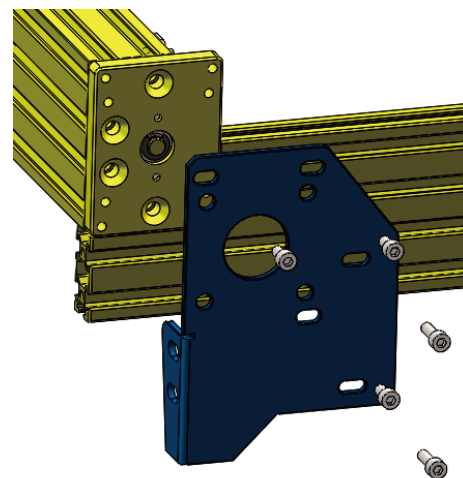
# Before Installation

**Step 5:** Remove the Spoilboard and the Dust Baffle.

**Step 6:** Remove 2 blue corner brackets of the CNC Base Frame.



Step 5

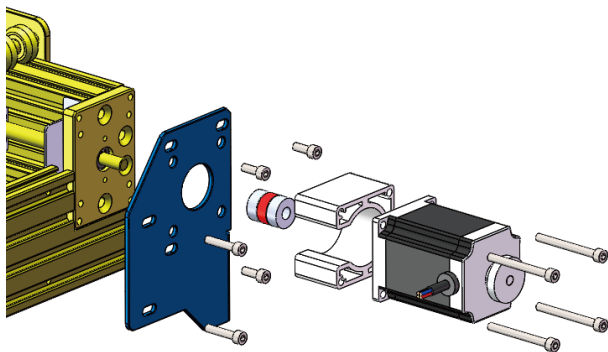


Step 6

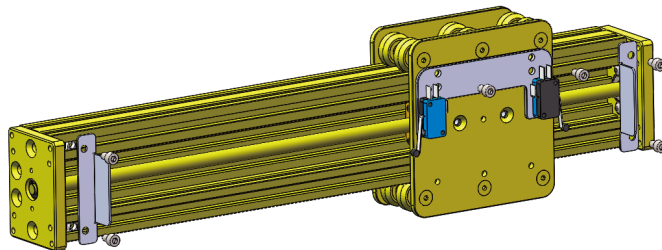
## Before Installation

**Step 7:** Remove the Y axis Stepper Motor and 2 blue corner brackets of the CNC Base Frame.

**Step 8:** Remove the Y-Axis Limit Switch Assembly and Limit Block.



Step 7

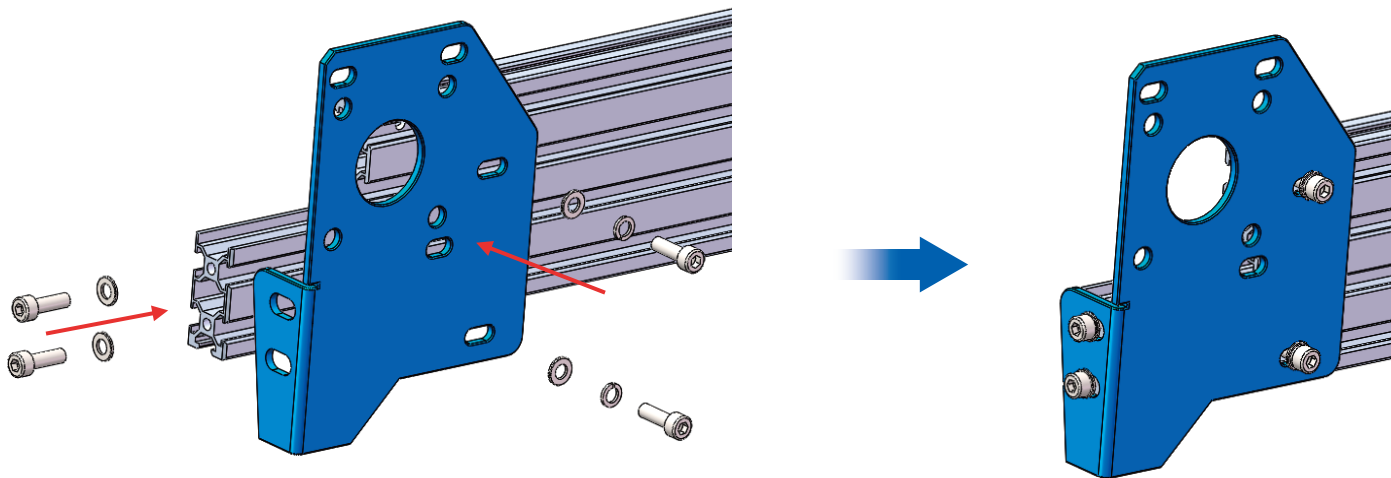


Step 8



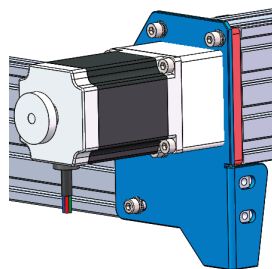
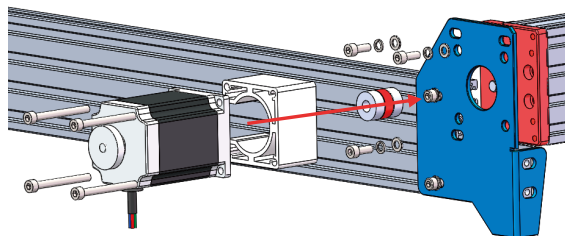
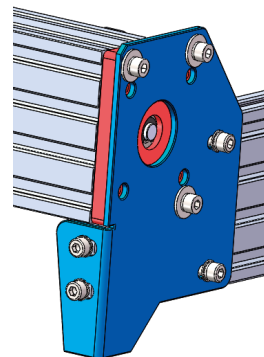
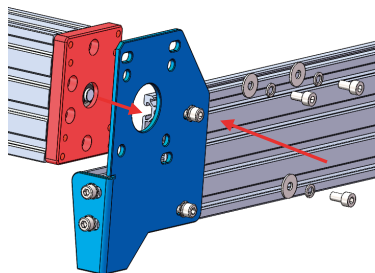
# Installation Steps

**Step 1:** After disassembling your PROVerXL 4030, start by installing the longer aluminum extrusions into the blue corner brackets using the same screws as before. All extended parts of the 1010 kit will be installed just the same as their shorter 4030 counterpart, using the screws, spring washers and flat washers that you got from disassembly.



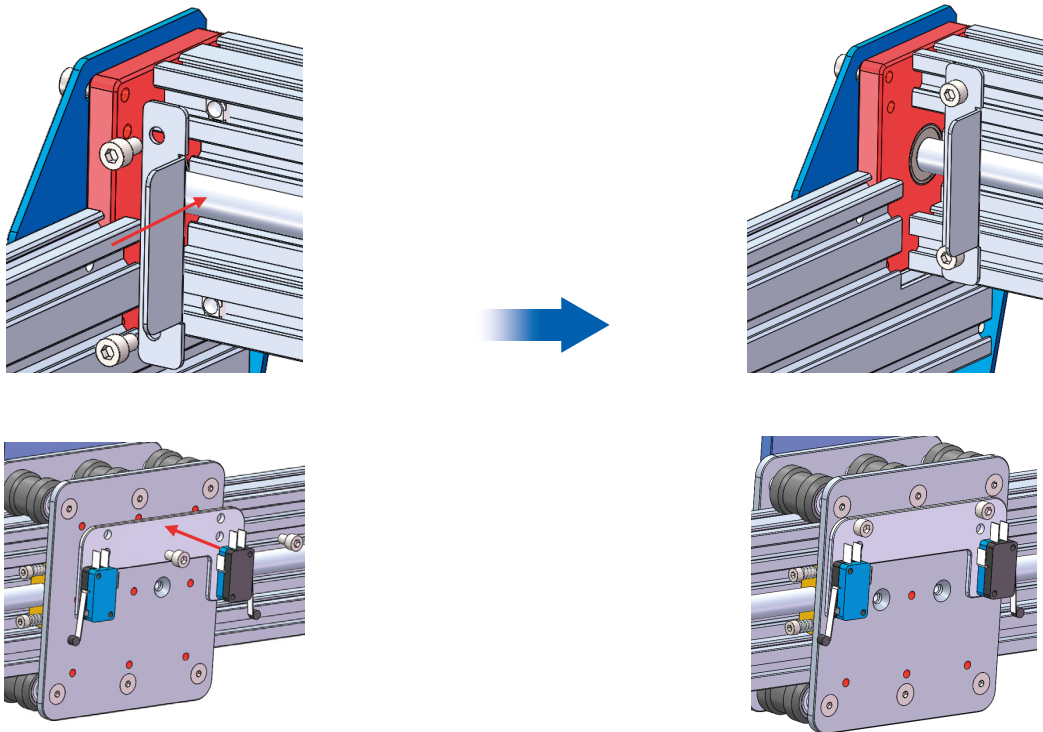
# Installation Steps

**Step 2:** Install the coupler and motor, tighten the screws of the coupler after the motor is installed. The left and right sides are installed in the same way.



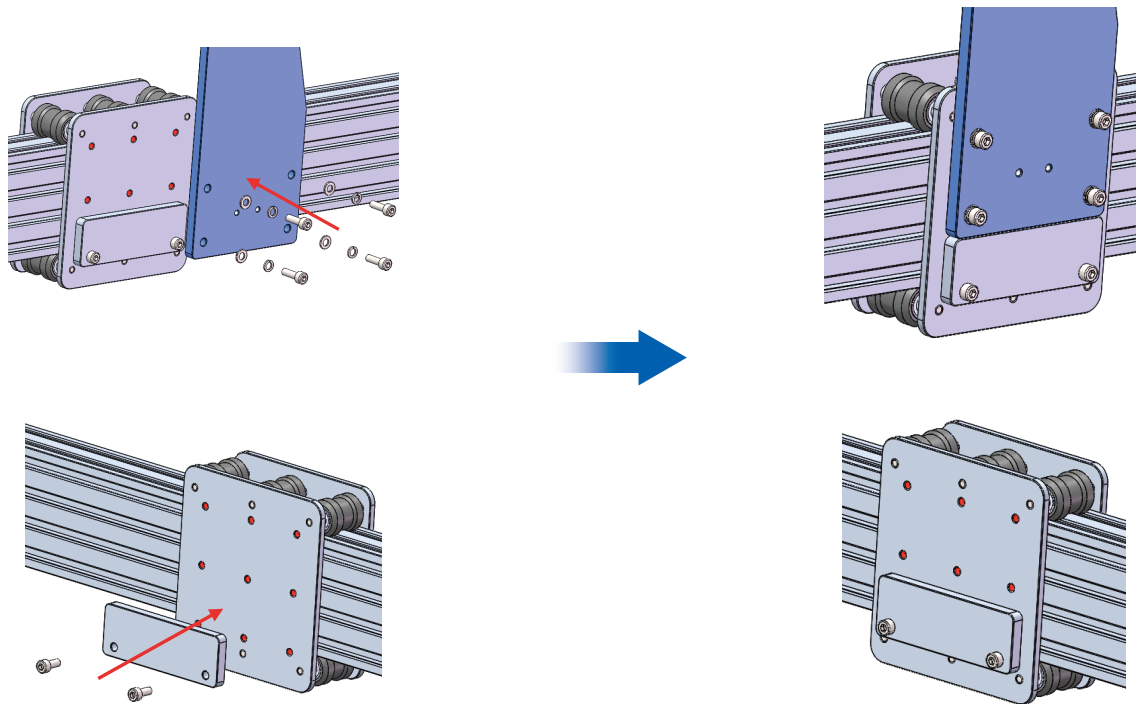
## Installation Steps

**Step 3:** Use the removed screws to install the Y-Axis limit blocks and limit switches, then adjust the limit switches distance.



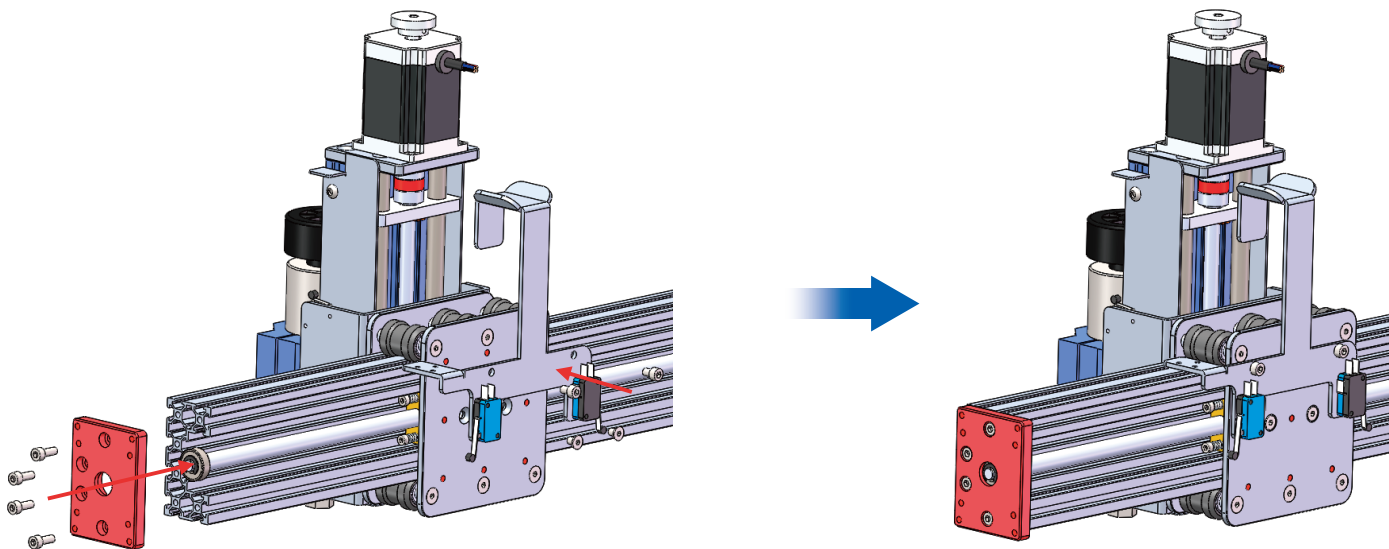
# Installation Steps

**Step 4:** Install the mounting block and gantry assembly using the removed screws. The left and right sides are installed in the same way.



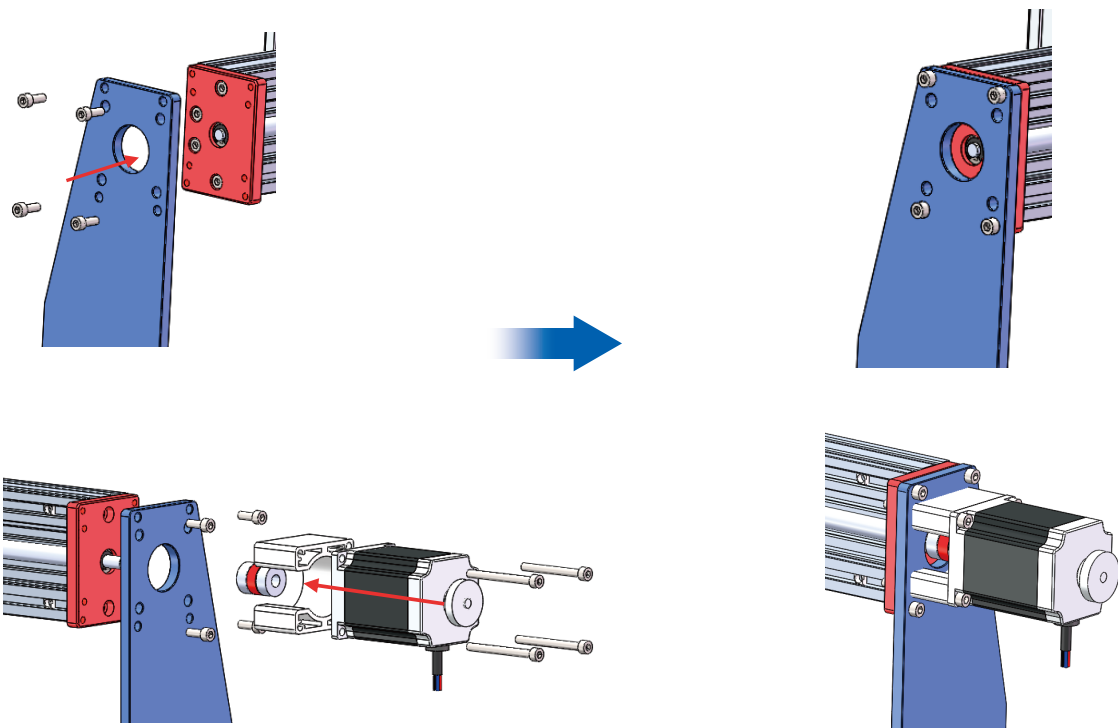
## Installation Steps

**Step 5:** Firstly, remove the side panel of the X-axis gantry (the side without the shaft), then slide on the X-Z assembly so that the holes on the rear plate are aligned with the holes on the slider. With the X-Z assembly installed, put the side panel back on and re-install all screws.



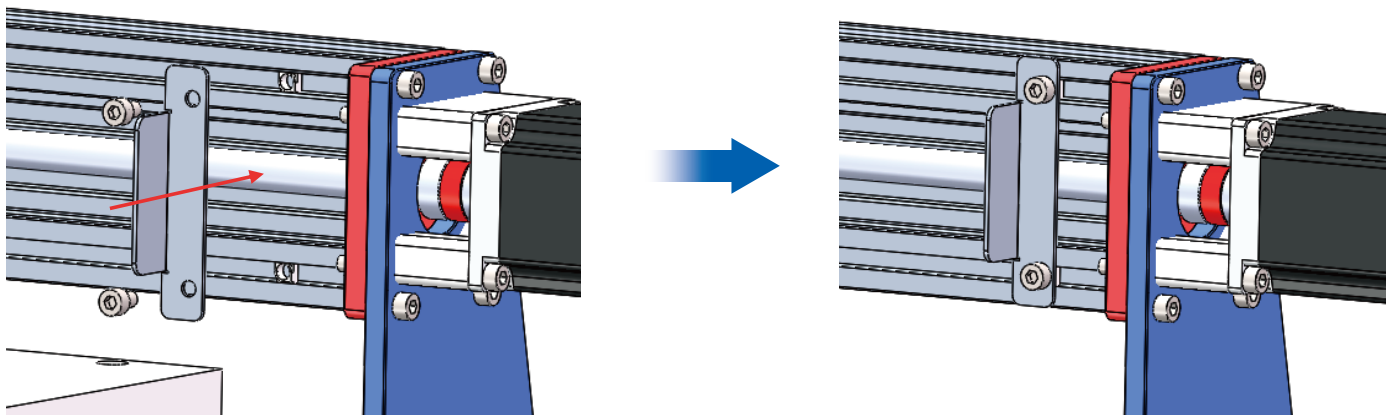
# Installation Steps

**Step 6:** Install the left and right gantry arms with the removed screws.



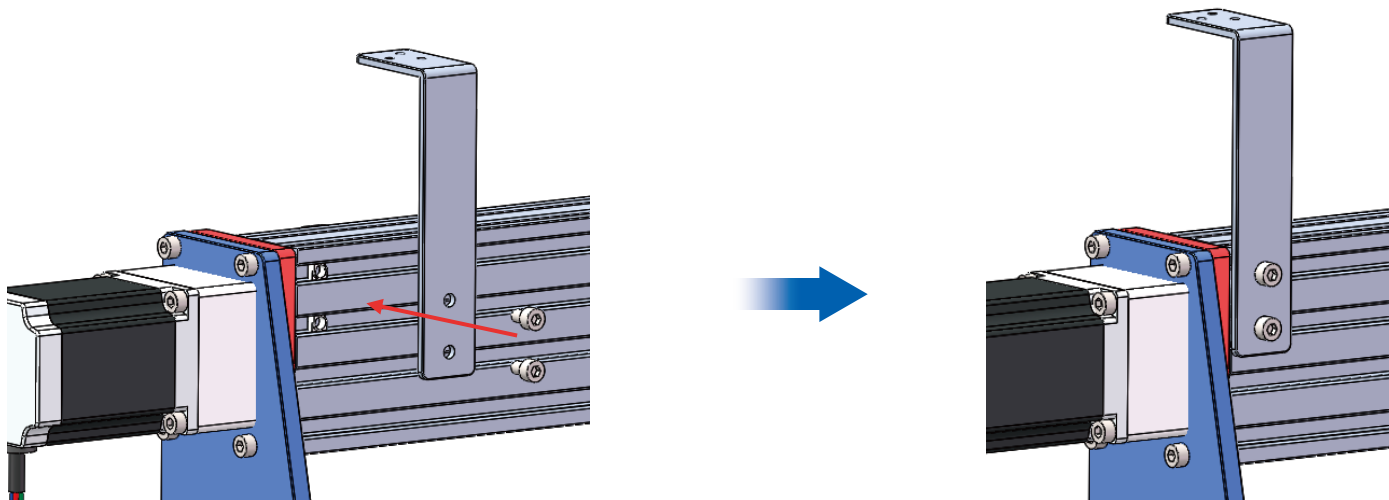
## Installation Steps

**Step 7:** Install the X-axis limit blocks with the removed screws and adjust the limit switches distance.



## Installation Steps

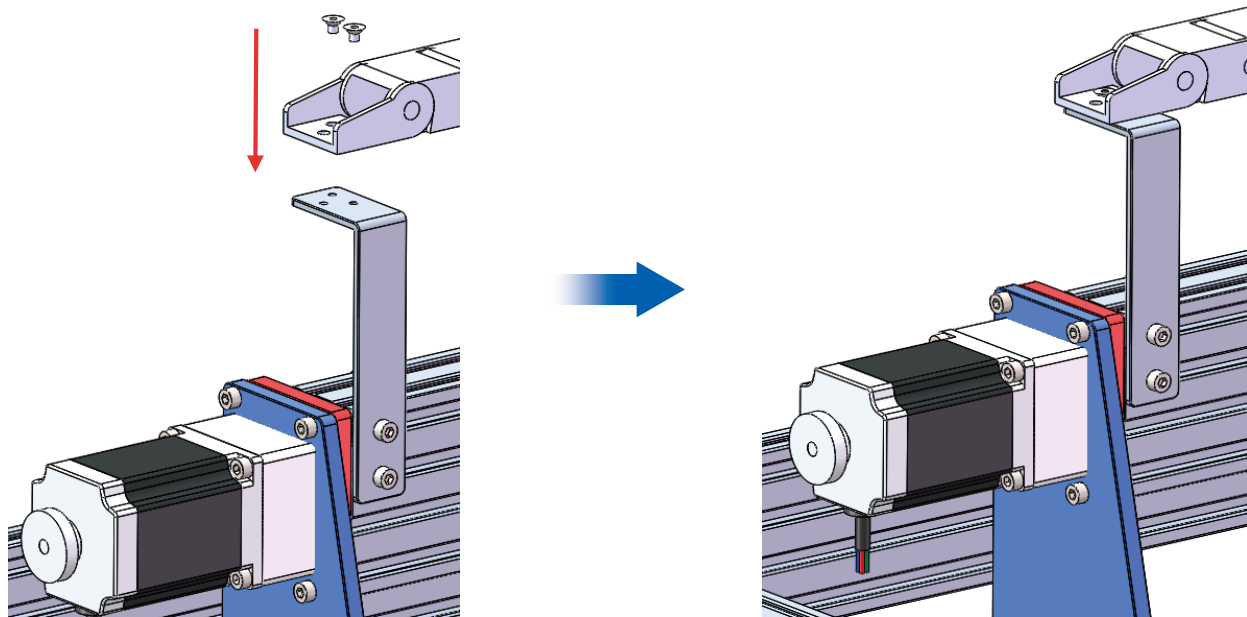
**Step 8:** Install the X-axis drag chain fastener using the removed screws.





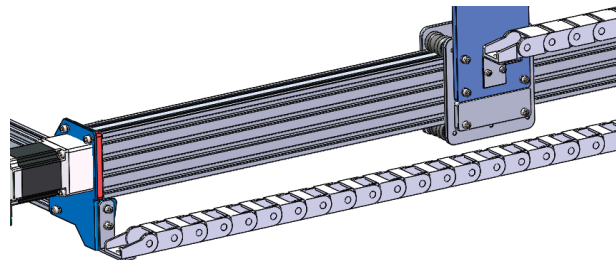
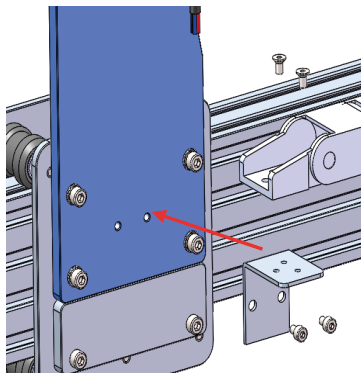
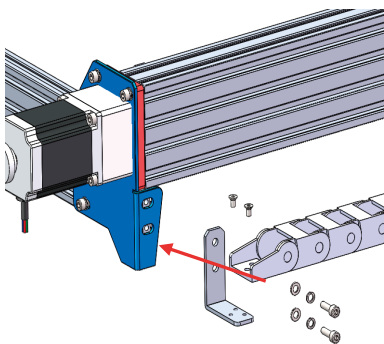
## Installation Steps

**Step 9:** Install the X-axis drag chain using the removed screws.



# Installation Steps

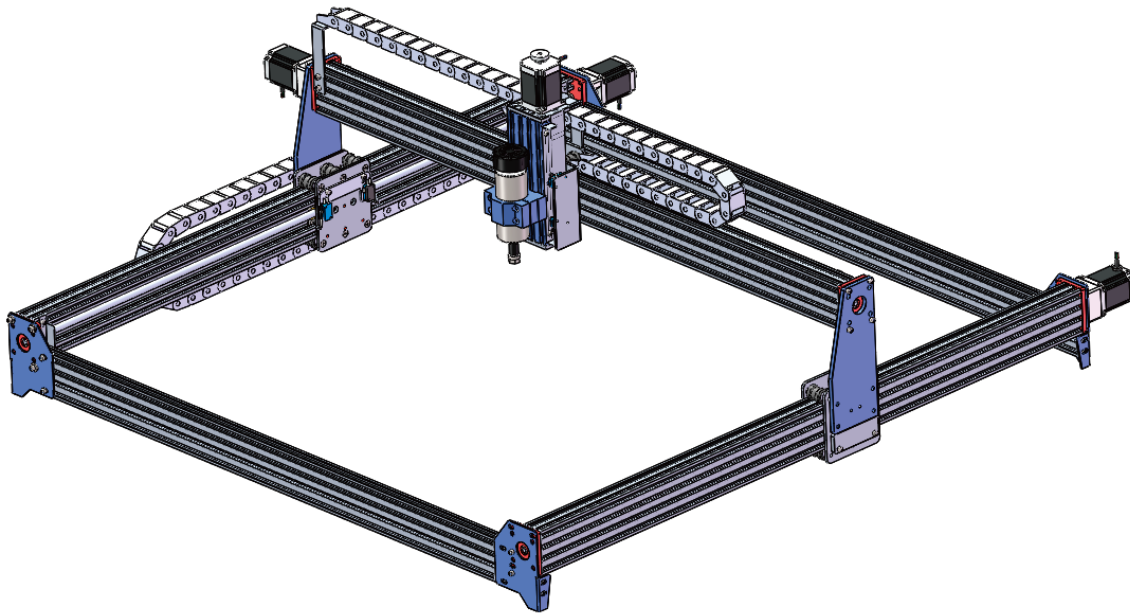
**Step 10:** Install the Drag Chain Mount and Drag Chain with the removed screws.





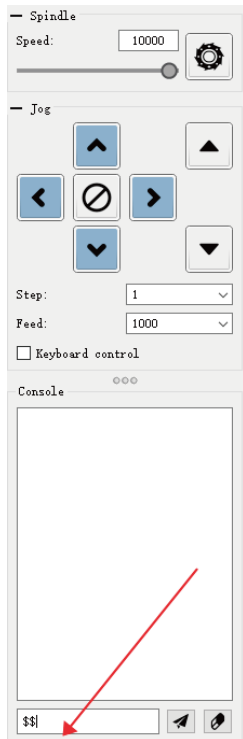
# Installation Steps

Installation Completed



# Parameter Setting

1. Enter \$\$ in Candle or other software control port (console)



2. Check the original parameters and modify them following:



\$21=1  
\$22=1  
\$27=3  
\$30=10000  
\$100=200  
\$101=200  
\$102=160  
\$110=2000  
\$111=2000  
\$112=2000  
\$120=300  
\$121=300  
\$122=300  
\$130=1000  
\$131=1000  
\$132=55



# Genmitsu

**Desktop CNC & Laser**

**[www.sainSMART.com](http://www.sainSMART.com)**  
**[support@sainSMART.com](mailto:support@sainSMART.com)**

Vastmind LLC, 5892 Losee Rd Ste. 132, N. Las Vegas, NV 89081

