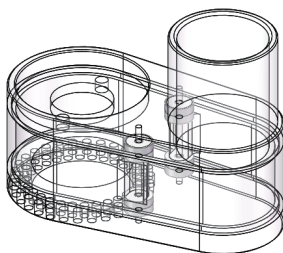


尺寸：60x90mm/折

对折（双面）

Genmitsu

3018 Dust Shoe Assembly Guide



If you need any assistance, please contact us via:

✉ Email: support@sainsmart.com

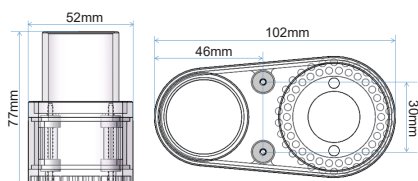
Facebook messenger: <https://m.me/SainSmart>

Help and support is also available from our Facebook Group



Specifications

1. **Material:** ABS
2. **Weight:** 86g (0.18lb)
3. **Compatible Machine:** Genmitsu 3018-PRO, 3018-PROVer, 3018-MX3, 3018-PROVer Mach3, 1810-PRO and other generic 3018-PRO CNC Machines
4. **Dimensional Drawing:**

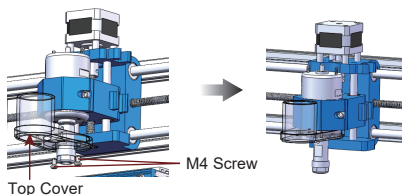


Note:

1. Make sure that the Top Cover of the dust shoe is secured tightly in place by the screws in step 1. Also make sure that all the magnets are firmly holding the dust shoe together without any obstructions.
2. Make sure that the vacuum cleaner tube has been inserted tightly before engraving so that it can achieve a better dust collection.
3. The length of the vacuum cleaner tube should be long enough so that it does not interfere with the movement of the spindle or loosen the dust shoe from the spindle.

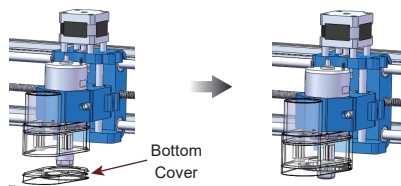
Step 1 Install the Top Cover

Install the Top Cover of the dust shoe on the spindle with 2 pieces of M4 x 8 screws.



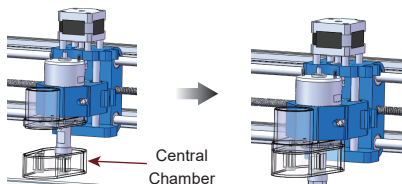
Step 3 Install the Bottom Cover

Align the magnets on the Bottom Cover with the magnets in the Central Chamber. Then the Bottom Cover will be attached to the Central Chamber of the dust shoe.



Step 2 Install the Central Chamber

Align the magnets on the top of the Central Chamber with the magnets on the Top Cover. Then the Central Chamber will be attached to the Top Cover of the dust shoe.



Step 4 Installing the vacuum cleaner tube

Insert the vacuum cleaner tube with 32mm outer diameter into the tube connection of the dust shoe Top Cover.

